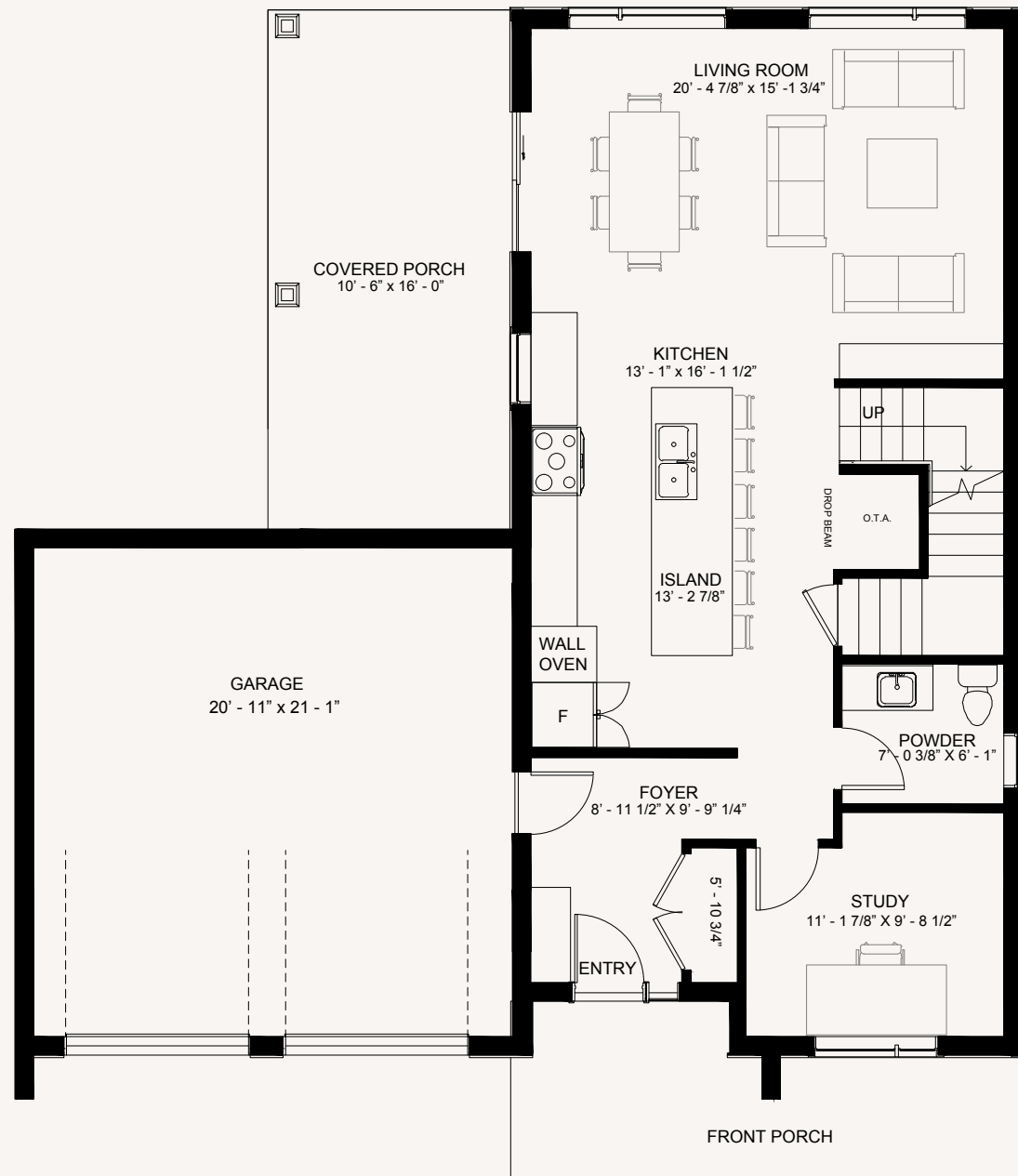


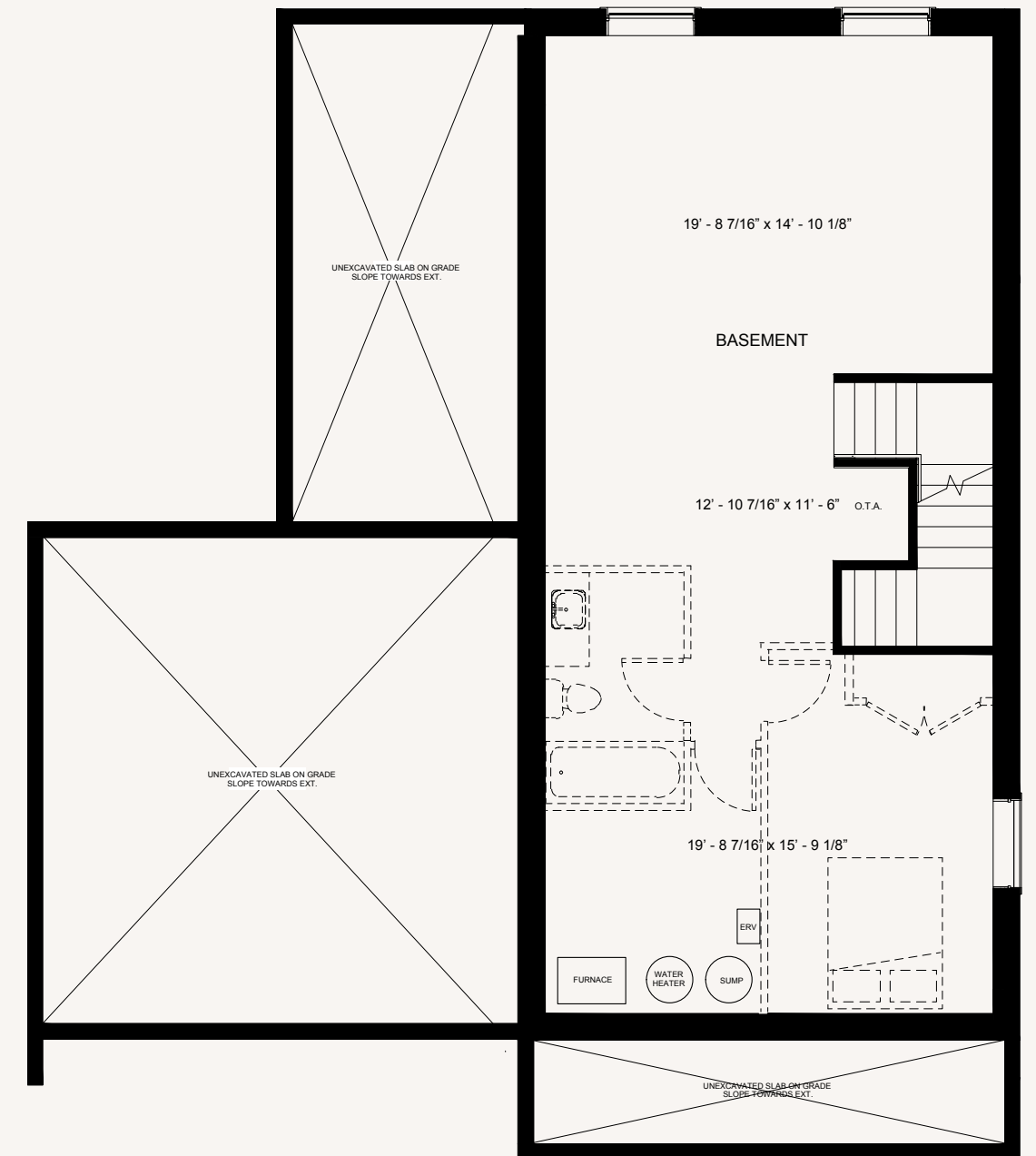
# THE MEADOWCREEK MODERN 1882 SQ.FT. | 3 BED | 2 1/2 BATH | 2 CAR GARAGE



MAIN FLOOR  
972 SQ.FT.



SECOND FLOOR  
910 SQ.FT.



OPTIONAL FINISHED BASEMENT  
816 SQ.FT.

Orientation of the home may be reversed and purchaser agrees to accept the same. Steps and porches may vary at any exterior entrances due to grading variance. Actual usable floor space may vary from the stated floor area. All Renderings are artist's conception. Dimensions, specifications and architectural detailing are subject to minor modifications. Brokers protected. E.A.O.E.